



Noxion LED Emergency Sign

DESCRIPTION

Introducing the new Noxion LED Emergency Sign; made of high quality PMMA material with IP20 and IK06 ratings. Easy to install for ceiling and walls; suitable for either one side or two sides signage. Included with four directions of exit sign, the height of all signs are 15cm, meeting the requirements of building regulations 1838. The Noxion Emergency Sign offers high brightness LED Light source with low power consumption. The emergency circuit can be checked manually with a built in button. The LED Emergency Sign can be purchased with side kit to be installed hanging from walls. The luminaire comes with 3 hours of emergency lighting, also with Noxion warranty is 3 years.

Noxion LED Emergency Sign can be used in shopping malls, hotels, hospitals or libraries; lighting up and securing safety exit for everyone in any application.



APPLICATIONS



Office



School



Parking lot



Housing



Station



Hospital

ELECTRICAL SUPPLY

EAN	Item Description	Power (W)	Input Voltage (V)	Frequency (Hz)	Lamp Current(mA)	Lumen (LM)	CCT (K)
8719157043342	Noxion LED Emergency Sign 1W autotest incl. 4 directions Viewing distance 3m EM3HR	1W	220-240V	50/60	240mA	20	6000K

SPECIFICATIONS

Technical Specifications	
Dimmable	No
IP	IP20
IK	IK06
Protection Class	Class II
Integrated Driver (Yes/No)	Yes

Mechanical Properties	
Housing Material	PC+PMMA
Housing Color	RAL 9016

Application	
Operating Temperature	0°C~+45°C
Charging Time	24hrs
Emergency hours	3hrs

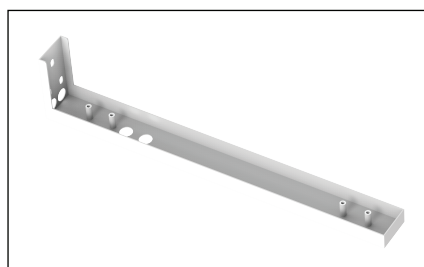
Certifications	
Fixture Certifications	CE / RoHs

PACKAGING INFORMATION

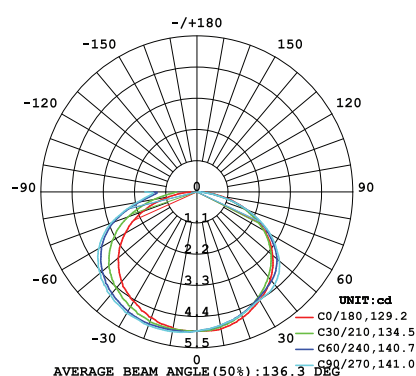
EAN	Item Description	Box 1 item		Masterbox		
		Dimension (mm) (LxWxH)	Weight (kg)	Units per masterbox	Dimension (mm) (LxWxH)	Weight (kg)
8719157043342	Noxion LED Emergency Sign 1W autotest incl. 4 directions Viewing distance 3m EM3HR	454*106*242	1.3	4	470*440*262	5.5

ACCESSORIES

EAN	Item
8719157043359	Side kit for Noxion LED Emergency Sign 1W autotest



PHOTOMETRIC SPECIFICATIONS



DIMENSIONAL DRAWING

